

MILLVILLE, NEW JERSEY

AL-891 (FAA)

NDB RNB <b>363</b>	APP CRS <b>147°</b>	Rwy ldg TDZE Apt Elev	<b>5057</b> <b>81</b> <b>85</b>
-----------------------	------------------------	-----------------------------	---------------------------------------

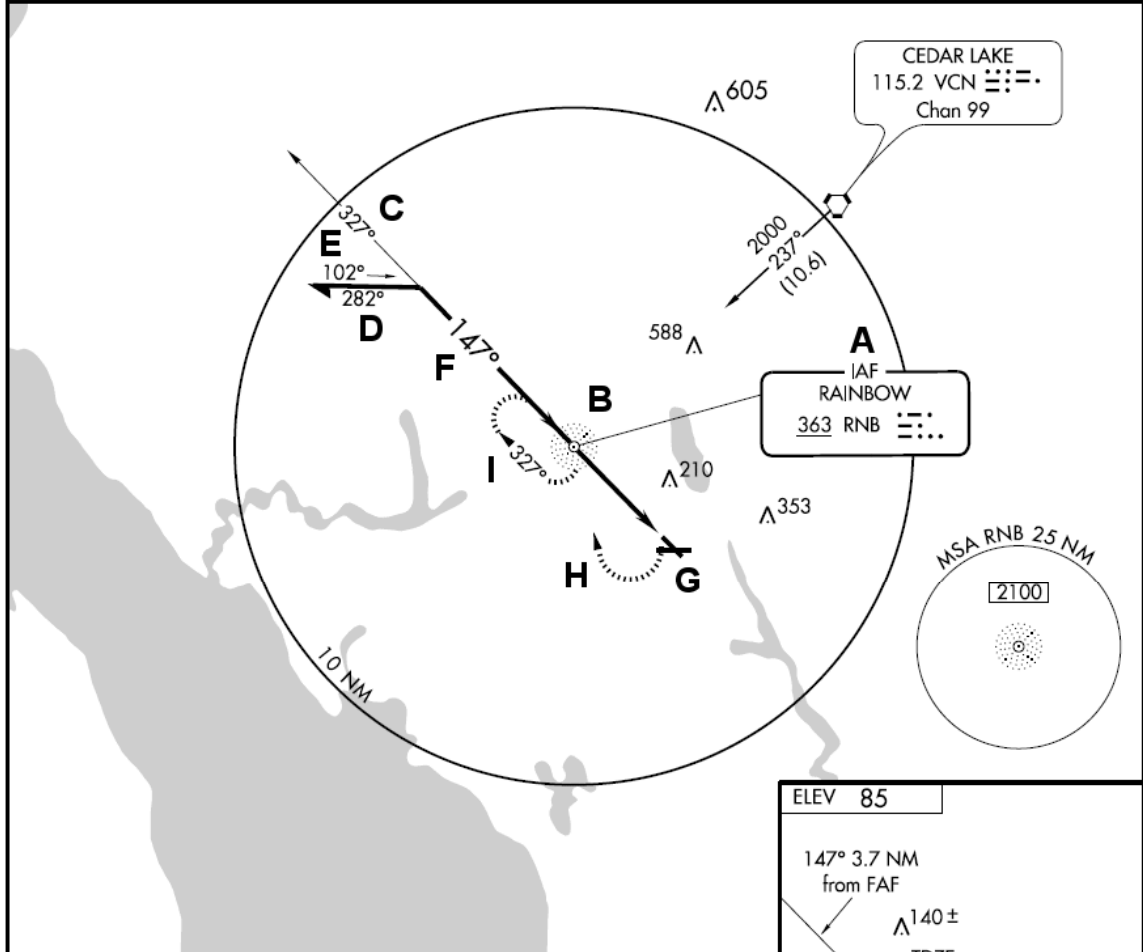
# NDB RWY 14

MILLVILLE MUNI (MIV)

**▼** When VGSi inop, straight-in/circling Rwy 14 procedure NA at night.

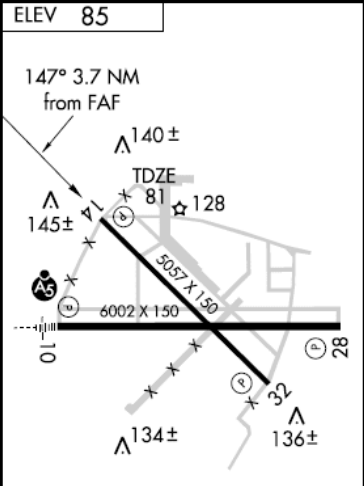
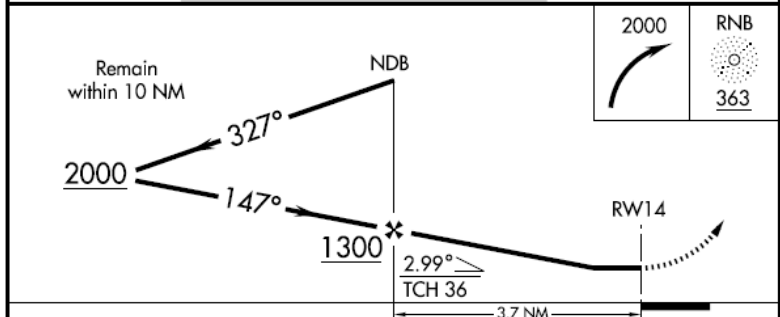
MISSED APPROACH: Climbing right turn to 2000 direct RNB NDB and hold, continue climb-in-hold to 2000.

ASOS <b>128.125</b>	ATLANTIC CITY APP CON <b>124.6 327.125</b>	MILLVILLE RADIO <b>123.65</b>	UNICOM <b>123.0</b>	(CTAF) <b>123.65</b>
------------------------	---	----------------------------------	------------------------	----------------------



NE-2, 31 JUL 2008 to 28 AUG 2008

NE-2, 31 JUL 2008 to 28 AUG 2008



CATEGORY	A	B	C	D
S-14	560-1 479 (500-1)		560-1¼ 479 (500-1¼)	560-1½ 479 (500-1½)
CIRCLING	560-1 475 (500-1)		560-1½ 475 (500-1½)	640-2 555 (600-2)

MIRL Rwy 10-28 and 14-32 **Ⓛ**

FAF to MAP 3.7 NM

Knots	60	90	120	150	180
Min:Sec	3:42	2:28	1:51	1:29	1:14

MILLVILLE, NEW JERSEY  
Amdt 6 07298

39°22'N - 75°04'W

# MILLVILLE MUNI (MIV)

## NDB RWY 14